

## APPLICATIONS

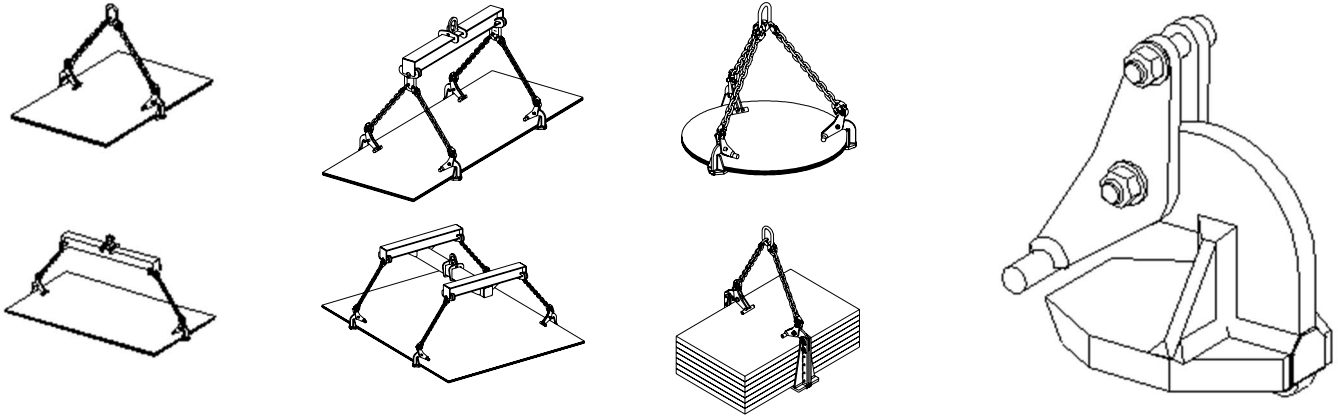
Lifting of horizontal plates or sheets (individual or bundles), circular plates or fabricated assemblies.

Accessories equipped with a tip up lever ensuring the clamping of the load.

Use in pairs for lifting horizontal plates or sheet metals, individual or in bundles:

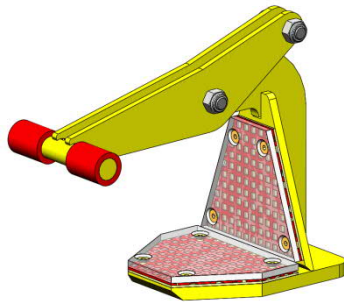
- 1 pair with a 2-legged sling
- Several pairs with 2-legged slings and lifting beam.
- Use in 3s with a 3-legged sling for lifting round sheet metals.

Fit the load into the clamps, making sure they are evenly distributed onto the piece to be lifted. Lifting ensures the clamps' locking. Clamping is proportional to the load lifted, thus avoiding an excessive marking.

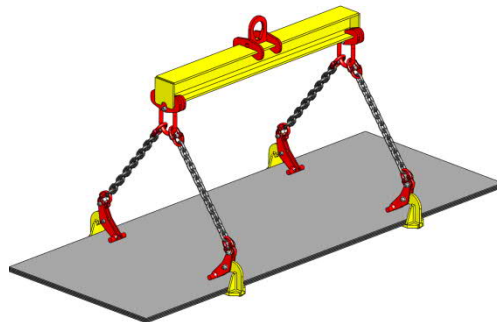


## DESCRIPTION

Accessories equipped with a tip up lever ensuring the clamping of the load.



TLH1 0-60 with polyurethane coating



TLH with 2-legged sling

### Clamps with polyurethane coating

These protections do not mark the manipulated sheet metal. This version is therefore to be preferred for handling fragile or painted products in order to avoid marking the products.

## FUNCTIONING

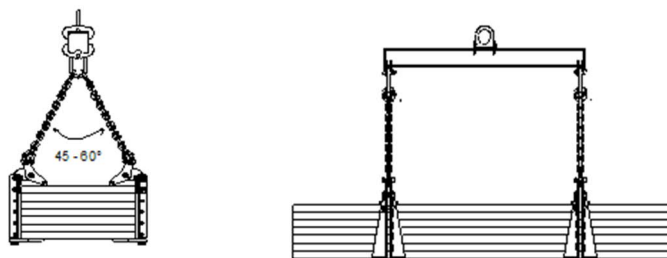
Use in pairs for lifting horizontal plates or sheet metals, individual or in bundles:

- 1 pair with a 2-legged sling.
- Several pairs with 2-legged slings and lifting beam.
- Use in 3s with a 3-legged sling for lifting round sheet metals.

Fit the load into the clamps, making sure they are evenly distributed onto the piece to be lifted. Lifting ensures the clamps' locking. Clamping is proportional to the load lifted, thus avoiding an excessive marking.

## IMPORTANT INSTRUCTIONS

- The plate or piece to be lifted must always be driven home into the throat of the clamp.
- The load must be rigid enough not to bend during handling operations.
- Adhere to the recommended sling angles.
- If the sling angle exceeds 60°, use a clamp with a higher WLL according to the tension increase in the sling's leg.
- Line up the slings in the same plane as the clamps.
- Working temperature: -20° to +80°C.



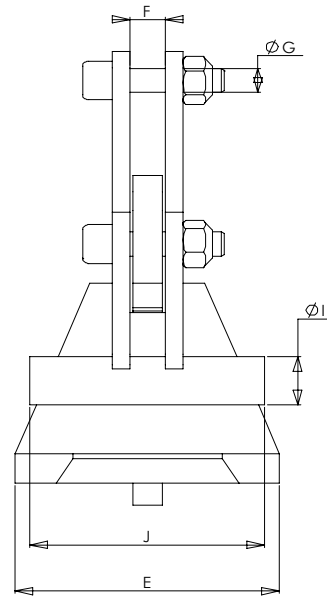
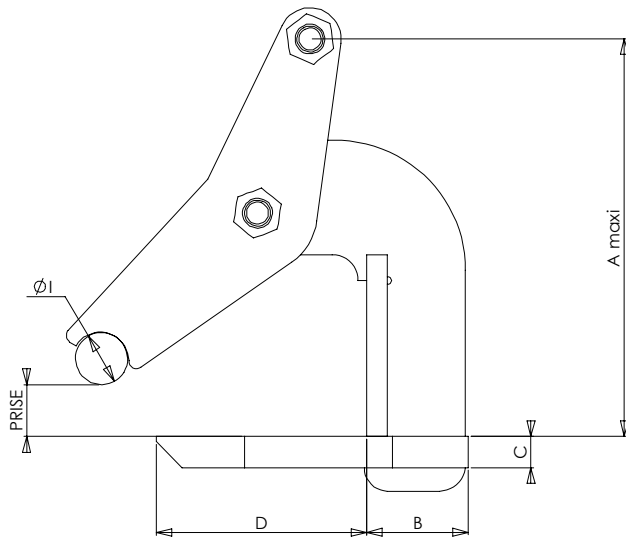
## GENERAL CHARACTERISTICS

- Hot epoxy coating.
- Safety factor: 3 in accordance with the EN 13155.2003 norm.
- Product with EC marking and delivered with a declaration of conformity and instructions for use.

## DIMENSIONAL CHARACTERISTICS

| Réf.           | Group code | WLL pair kg | Opening |      | A   | B  | C   | D   | E  | F  | G  | I   | J  | Sling hook |      | chain mini* | Weight/ pair kg |
|----------------|------------|-------------|---------|------|-----|----|-----|-----|----|----|----|-----|----|------------|------|-------------|-----------------|
|                |            |             | mini    | maxi |     |    |     |     |    |    |    |     |    | mini       | maxi |             |                 |
| TLH1 0-60      | 51038      | 1 000       | 60      | 40   | 155 | 40 | 12  | 80  | 90 | 12 | 10 | 20  | 80 | 6          |      | 6           |                 |
| TLH1 0-40-PU   | 189218     |             | 40      |      |     |    |     |     |    |    |    |     |    |            |      |             |                 |
| TLH1 0-120     | 51048      |             | 120     |      |     |    |     |     |    |    |    |     |    |            |      |             |                 |
| TLH1 0-100-PU  | 189228     | 2 000       | 100     | 255  | 50  | 12 | 120 | 140 | 12 | 12 | 20 | 120 | 10 |            | 10   |             |                 |
| TLH2 0-60      | 51058      |             | 60      | 165  | 53  | 20 | 100 | 119 | 14 | 12 | 20 | 100 |    |            |      |             |                 |
| TLH2 0-40-PU   | 189238     |             | 40      |      |     |    |     |     |    |    |    |     |    |            |      |             |                 |
| TLH2 0-120     | 51068      | 3 000       | 120     | 260  | 60  | 15 | 120 | 179 | 14 | 12 | 20 | 150 | 16 |            | 16   |             |                 |
| TLH2 0-100-PU  | 189248     |             | 100     |      |     |    |     |     |    |    |    |     |    |            |      |             |                 |
| TLH3 0-60      | 51078      |             | 60      | 182  | 60  | 20 | 100 | 125 | 16 | 12 | 20 | 100 |    |            |      |             |                 |
| TLH3 0-40-PU   | 189258     | 4 000       | 40      | 324  | 70  | 20 | 150 | 180 | 18 | 16 | 30 | 150 | 26 | 45°        | 60°  | 10          | 26              |
| TLH3 0-150     | 51088      |             | 150     |      |     |    |     |     |    |    |    |     |    |            |      |             |                 |
| TLH3 0-130-PU  | 189268     |             | 130     |      |     |    |     |     |    |    |    |     |    |            |      |             |                 |
| TLH4 0-60      | 51098      | 5 000       | 60      | 192  | 69  | 25 | 110 | 125 | 22 | 16 | 20 | 100 | 16 |            | 16   |             |                 |
| TLH4 0-40-PU   | 189278     |             | 40      |      |     |    |     |     |    |    |    |     |    |            |      |             |                 |
| TLH4 0-150     | 51108      |             | 150     | 345  | 74  | 25 | 150 | 159 | 22 | 16 | 30 | 130 |    |            |      |             |                 |
| TLH4 0-130-PU  | 189288     | 10 000      | 130     | 368  | 100 | 30 | 160 | 240 | 35 | 24 | 30 | 180 | 34 |            | 34   |             |                 |
| TLH5 0-60      | 51118      |             | 60      | 197  | 75  | 25 | 120 | 150 | 22 | 16 | 20 | 130 |    |            |      |             |                 |
| TLH5 0-40-PU   | 189298     |             | 40      |      |     |    |     |     |    |    |    |     |    |            |      |             |                 |
| TLH5 0-150     | 51128      | 13          | 150     | 357  | 80  | 25 | 151 | 200 | 22 | 20 | 30 | 160 | 42 |            | 42   |             |                 |
| TLH5 0-130-PU  | 189308     |             | 130     |      |     |    |     |     |    |    |    |     |    |            |      |             |                 |
| TLH10 0-60     | 51138      |             | 60      | 205  | 80  | 30 | 119 | 170 | 35 | 24 | 30 | 120 |    |            |      |             |                 |
| TLH10 0-40-PU  | 189318     | 16          | 40      | 368  | 100 | 30 | 160 | 240 | 35 | 24 | 30 | 180 | 32 |            | 32   |             |                 |
| TLH10 0-150    | 51148      |             | 150     |      |     |    |     |     |    |    |    |     |    |            |      |             |                 |
| TLH10 0-130-PU | 189328     |             | 130     |      |     |    |     |     |    |    |    |     |    |            |      |             |                 |

\* provide a 2-legged chain sling grade 80 per pair of clamps, assembled onto a coupling at the end of each leg.



**PRACTICAL INFORMATION FOR SLING DEFINITION**

|                           |            |             |             |             |             |             |             |
|---------------------------|------------|-------------|-------------|-------------|-------------|-------------|-------------|
| Plates width (mm)         | 750 à 1000 | 1150 à 1500 | 1500 à 2000 | 1900 à 2500 | 2300 à 3000 | 2670 à 3500 | 3050 à 4000 |
| Length of each chain (mm) | 1000       | 1500        | 2000        | 2500        | 3000        | 3500        | 4000        |